

EarthAgriculture

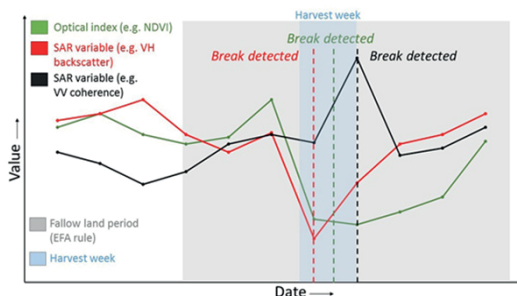
ASSUMPTION

Agriculture is a key remote sensing application with high requirements. The Sentinel constellation of Earth Observation (EO) satellites provides unique and new possibilities to monitor global agricultural landscapes. The vast database of images acquired at a high temporal frequency can now enable identifying changes in land use management or intensity, specific cropping practices and land use dynamics, and harvests of various crop types multiple times in a single season. This offers unprecedented and unique opportunities for the monitoring of Ecological Focus Areas (EFAs).

DESCRIPTION

EarthAgriculture pilot is proposed in the frame of the SnapEarth project and has the ambition to provide a service easy to use that offer to the users the possibility to run and get the results from the already validated processors developed during the projects Sentinel2-Agriculture and Sen4CAP (Sentinels for Common Agricultural Policy) but also for the future released Sen4Stat (Sentinels for Statistics) project. These systems already offer valuable validated processors, but their maintenance and usage might be sometimes difficult for persons that don't have IT experience. EarthAgriculture comes with a simple web interface allowing the users to focus on their business instead of IT related administration and issues. EarthAgriculture offer the following services:

- Vegetation Status Indicators
- Crop Type Map
- Dynamic Crop Mask
- Parcel Level Crop Type
- Markers database
- Agricultural practices
- Grassland mowing



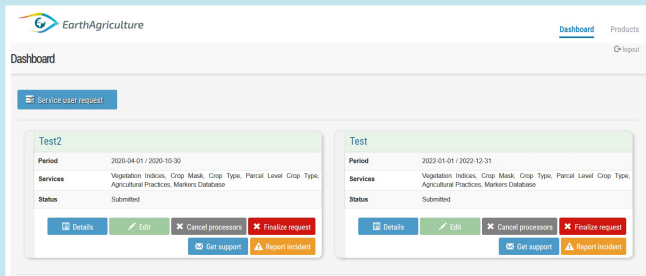
WHO IS THE SERVICE DEDICATED TO?

Our EarthAgriculture pilot is mainly dedicated to public administrations that are the individuals or groups that can make decisions related to agricultural management policies and programs (like paying agencies, for example) but also to private customers who specialize in various fields related to agriculture and that can use the proposed solutions in a practical way.

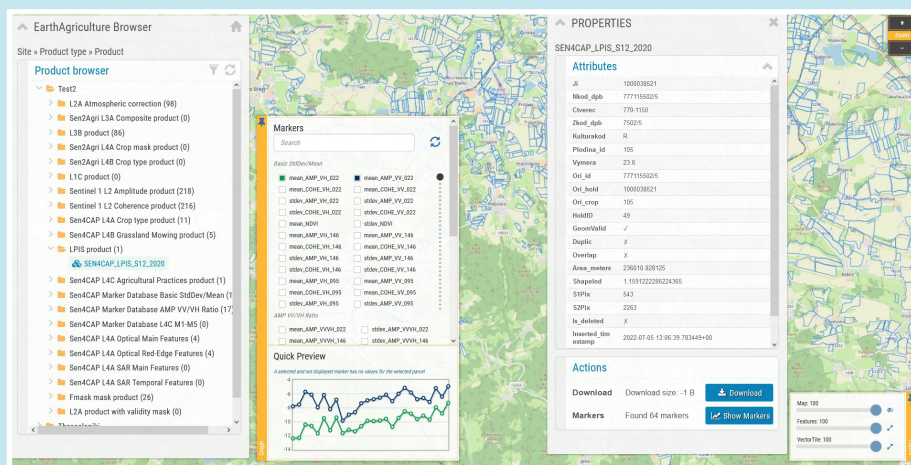
FUNCTIONALITY

EarthAgriculture will be a paid service that runs as a web-based accessible platform. The users will have the possibility to:

- Register and login to the platform and have access to the EarthAgriculture dashboard



- Create new requests for the area of interest and for the desired time interval, selecting the processors to be executed
- Analyse the outputs of the processing on the internal products browser:



- Use the services REST API to automatize all the operations (create requests, extract products, monitoring, close requests etc.)

PILOT DEVELOPMENT

EarthAgriculture is intended to be used by users all around the globe and if they provide the training and configuration data in the format requested by the service.

The pilot is currently fully functional and deployed on two platforms: one platform in Creodias (made available via EarthSelf platform) and another platform that is available at an address that is a subdomain of CS Group – ROMANIA.